

## Test Report

No. CANML1827022401

Date: 04 Jan 2019

Page 1 of 6

DONGGUAN WANXIN METAL PRODUCTS CO.,LTD;SHENZHEN CITY JUNHAOSHENG METAL MATERIALS CO.,LTD;SHENZHEN JUNJINGSHENG SPECIAL STEEL CO.,LTD;DONGGUAN JUNHAOSHENG METAL MATERIALS CO.,LTD;ZHONGSHAN JUNHAOSHENG METAL MATERIALS CO.,LTD  
NO.1-2 ALONG THE RIVER MAOZHU MOUNTAIN VILLAGE CHANGPING TOWN DONGGUAN CITY  
GUANGDONG PROVINCE CHINA

The following sample(s) was/were submitted and identified on behalf of the clients as : 304F

SGS Job No. : SZIN1812017200PC - SZ

Date of Sample Received : 27 Dec 2018

Testing Period : 27 Dec 2018 - 04 Jan 2019

Test Requested : Selected test(s) as requested by client.

Test Method : Please refer to next page(s).

Test Results : Please refer to next page(s).

Conclusion : Based on the performed tests on submitted sample(s), the results of Lead, Mercury, Cadmium, Hexavalent chromium, Polybrominated biphenyls (PBBs), Polybrominated diphenyl ethers (PBDEs) and Phthalates such as Bis(2-ethylhexyl) phthalate (DEHP) , Butyl benzyl phthalate (BBP), Dibutyl phthalate (DBP) , and Diisobutyl phthalate (DIBP) comply with the limits as set by RoHS Directive (EU) 2015/863 amending Annex II to Directive 2011/65/EU.

Signed for and on behalf of  
SGS-CSTC Standards Technical Services Co., Ltd. Guangzhou Branch

Annie Ren

Annie Ren  
Approved Signatory



Test Results :

Test Part Description :

| Specimen No. | SGS Sample ID    | Description       |
|--------------|------------------|-------------------|
| SN1          | CAN18-270224.001 | Silver-grey metal |

Remarks :

- (1) 1 mg/kg = 1 ppm = 0.0001%
- (2) MDL = Method Detection Limit
- (3) ND = Not Detected ( < MDL )
- (4) "-" = Not Regulated

**RoHS Directive (EU) 2015/863 amending Annex II to Directive 2011/65/EU**

Test Method : With reference to IEC 62321-4:2013+A1:2017, IEC 62321-5:2013, IEC 62321-7-1:2015 , IEC 62321-6:2015 and IEC 62321-8:2017, analyzed by ICP-OES , UV-Vis and GC-MS .

| Test Item(s)                  | Limit | Unit               | MDL  | 001 |
|-------------------------------|-------|--------------------|------|-----|
| Cadmium (Cd)                  | 100   | mg/kg              | 2    | ND  |
| Lead (Pb)                     | 1,000 | mg/kg              | 2    | ND  |
| Mercury (Hg)                  | 1,000 | mg/kg              | 2    | ND  |
| Hexavalent Chromium (Cr(VI))▼ | -     | µg/cm <sup>2</sup> | 0.10 | ND  |
| Sum of PBBs                   | 1,000 | mg/kg              | -    | ND  |
| Monobromobiphenyl             | -     | mg/kg              | 5    | ND  |
| Dibromobiphenyl               | -     | mg/kg              | 5    | ND  |
| Tribromobiphenyl              | -     | mg/kg              | 5    | ND  |
| Tetrabromobiphenyl            | -     | mg/kg              | 5    | ND  |
| Pentabromobiphenyl            | -     | mg/kg              | 5    | ND  |
| Hexabromobiphenyl             | -     | mg/kg              | 5    | ND  |
| Heptabromobiphenyl            | -     | mg/kg              | 5    | ND  |
| Octabromobiphenyl             | -     | mg/kg              | 5    | ND  |
| Nonabromobiphenyl             | -     | mg/kg              | 5    | ND  |
| Decabromobiphenyl             | -     | mg/kg              | 5    | ND  |
| Sum of PBDEs                  | 1,000 | mg/kg              | -    | ND  |
| Monobromodiphenyl ether       | -     | mg/kg              | 5    | ND  |
| Dibromodiphenyl ether         | -     | mg/kg              | 5    | ND  |
| Tribromodiphenyl ether        | -     | mg/kg              | 5    | ND  |
| Tetrabromodiphenyl ether      | -     | mg/kg              | 5    | ND  |
| Pentabromodiphenyl ether      | -     | mg/kg              | 5    | ND  |



Unless otherwise agreed in writing, this document is issued by the Company subject to its General Conditions of Service printed overleaf, available on request or accessible at <http://www.sgs.com/en/Terms-and-Conditions.aspx> and, for electronic format documents, subject to Terms and Conditions for Electronic Documents at <http://www.sgs.com/en/Terms-and-Conditions/Terms-e-Documents.aspx>. Attention is drawn to the limitation of liability, indemnification and jurisdiction issues defined therein. Any holder of this document is advised that information contained hereon reflects the Company's findings at the time of its intervention only and within the limits of Client's instructions, if any. The Company's sole responsibility is to its Client and this document does not exonerate parties to a transaction from exercising all their rights and obligations under the transaction documents. This document cannot be reproduced except in full, without prior written approval of the Company. Any unauthorized alteration, forgery or falsification of the content or appearance of this document is unlawful and offenders may be prosecuted to the fullest extent of the law. Unless otherwise stated the results shown in this test report refer only to the sample(s) tested.

Attention: To check the authenticity of testing /inspection report & certificate, please contact us at telephone: (86-755) 8307 1443, or email: CN\_Doccheck@sgs.com

# Test Report

No. CANML1827022401

Date: 04 Jan 2019

Page 3 of 6

| <u>Test Item(s)</u>                 | <u>Limit</u> | <u>Unit</u> | <u>MDL</u> | <u>001</u> |
|-------------------------------------|--------------|-------------|------------|------------|
| Hexabromodiphenyl ether             | -            | mg/kg       | 5          | ND         |
| Heptabromodiphenyl ether            | -            | mg/kg       | 5          | ND         |
| Octabromodiphenyl ether             | -            | mg/kg       | 5          | ND         |
| Nonabromodiphenyl ether             | -            | mg/kg       | 5          | ND         |
| Decabromodiphenyl ether             | -            | mg/kg       | 5          | ND         |
| Dibutyl phthalate (DBP)             | 1000         | mg/kg       | 50         | ND         |
| Butyl benzyl phthalate (BBP)        | 1000         | mg/kg       | 50         | ND         |
| Bis (2-ethylhexyl) phthalate (DEHP) | 1000         | mg/kg       | 50         | ND         |
| Diisobutyl Phthalates (DIBP)        | 1000         | mg/kg       | 50         | ND         |

## Notes :

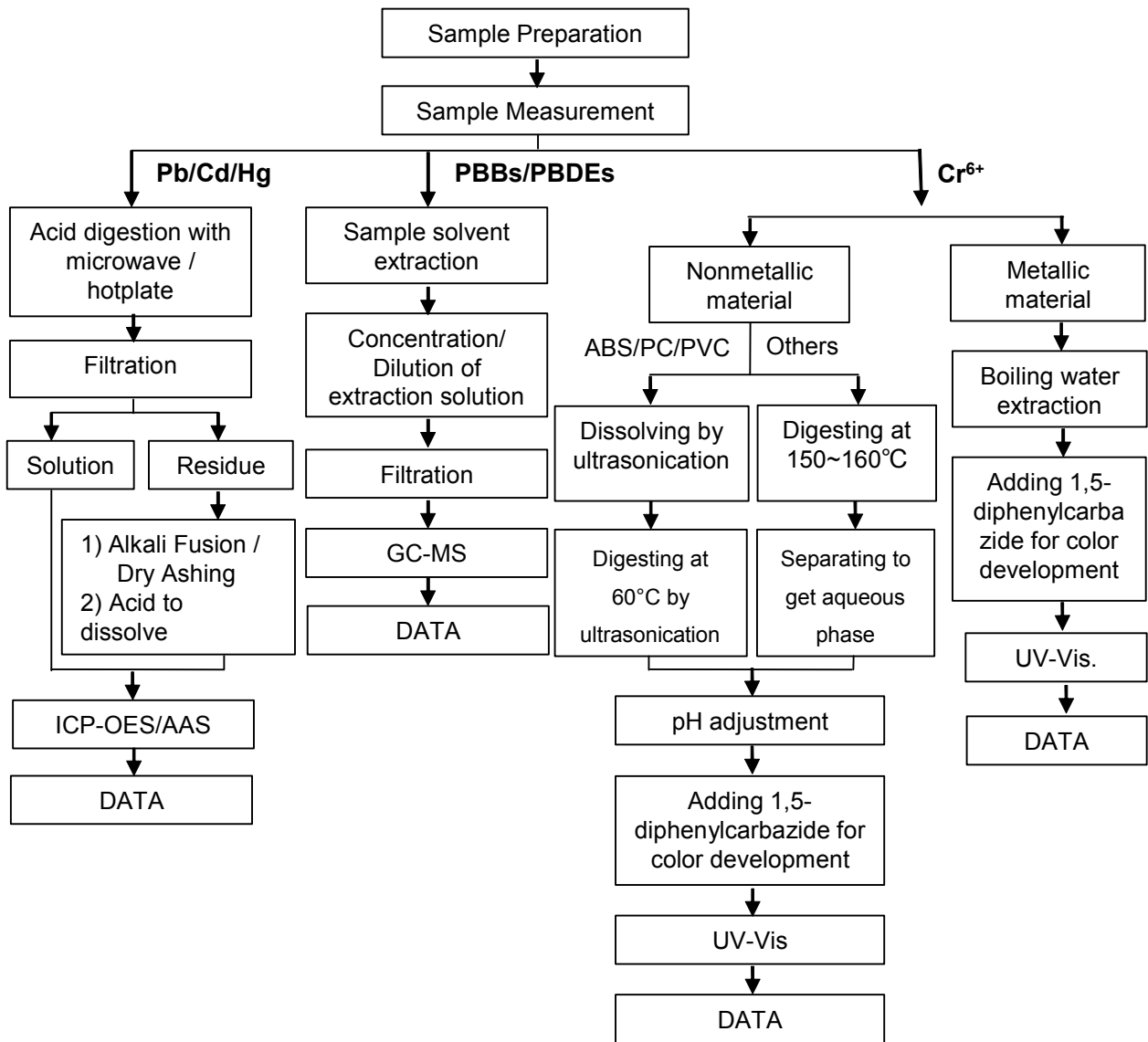
- (1) The maximum permissible limit is quoted from RoHS Directive (EU) 2015/863.IEC 62321 series is equivalent to EN 62321 series  
[http://www.cenelec.eu/dyn/www/f?p=104:30:1742232870351101:::FSP\\_ORG\\_ID,FSP\\_LANG\\_ID:1258637,25](http://www.cenelec.eu/dyn/www/f?p=104:30:1742232870351101:::FSP_ORG_ID,FSP_LANG_ID:1258637,25)
- (2) ▽= a. The sample is positive for CrVI if the CrVI concentration is greater than 0.13 µg/cm<sup>2</sup>. The sample coating is considered to contain CrVI  
 b. The sample is negative for CrVI if CrVI is ND (concentration less than 0.10 µg/cm<sup>2</sup>). The coating is considered a non-CrVI based coating  
 c. The result between 0.10 µg/cm<sup>2</sup> and 0.13 µg/cm<sup>2</sup> is considered to be inconclusive - unavoidable coating variations may influence the determination  
 Information on storage conditions and production date of the tested sample is unavailable and thus Cr(VI) results represent status of the sample at the time of testing.



ATTACHMENTS

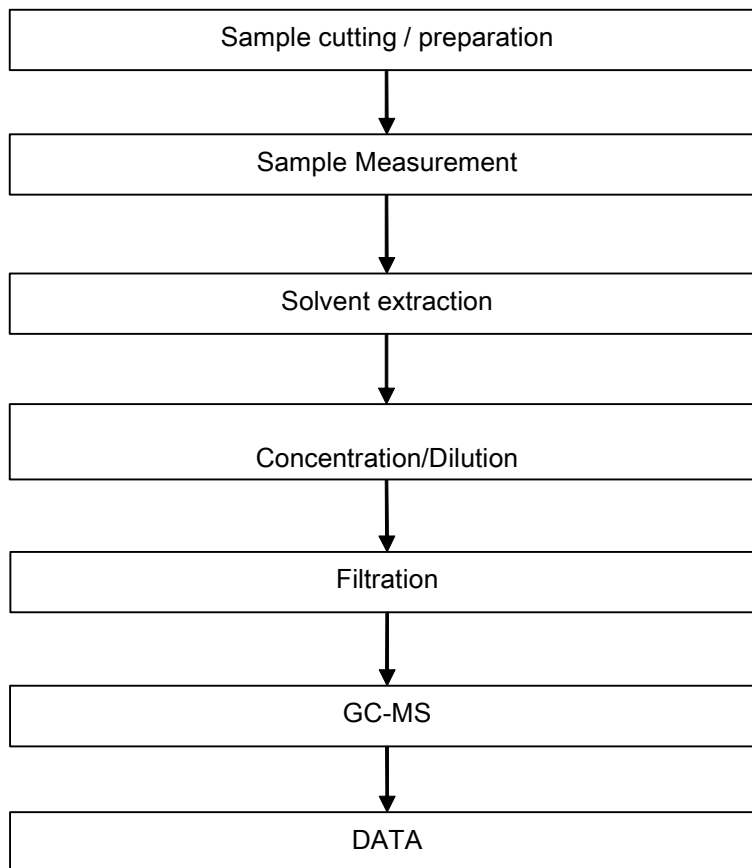
**Pb/Cd/Hg/Cr<sup>6+</sup>/PBBs/PBDEs Testing Flow Chart**

1) These samples were dissolved totally by pre-conditioning method according to below flow chart. (Cr<sup>6+</sup> and PBBs/PBDEs test method excluded).



## ATTACHMENTS

### Phthalates Testing Flow Chart





Sample photo:



SGS authenticate the photo on original report only

\*\*\* End of Report \*\*\*